

# TYPE 1 STANDARD HINGE ENCLOSURES WITH KEYED LOCK

1-2

TYPE 1 ENCLOSURES



Industry Standards  
UL 508A, Type 1  
NEMA Type 1

**UL** US LISTED  
UL File E235575

### Applications:

Designed for indoor applications, which do not have oil-tight and dust-tight requirements.

### Construction:

- Steel fabricated doors and enclosures.
- Door and body stiffeners installed when width is greater than 30 inches.
- Doors secured with butt hinges and keyed quarter turn latch.
- Locks are keyed alike.
- Mounting holes supplied on back of enclosure.
- Enclosure design allows mounting with doors opening either left or right.
- Standoff provided for mounting of optional back panels.
- Various sizes of knockouts are supplied on all four sides of the enclosure.

### Finish:

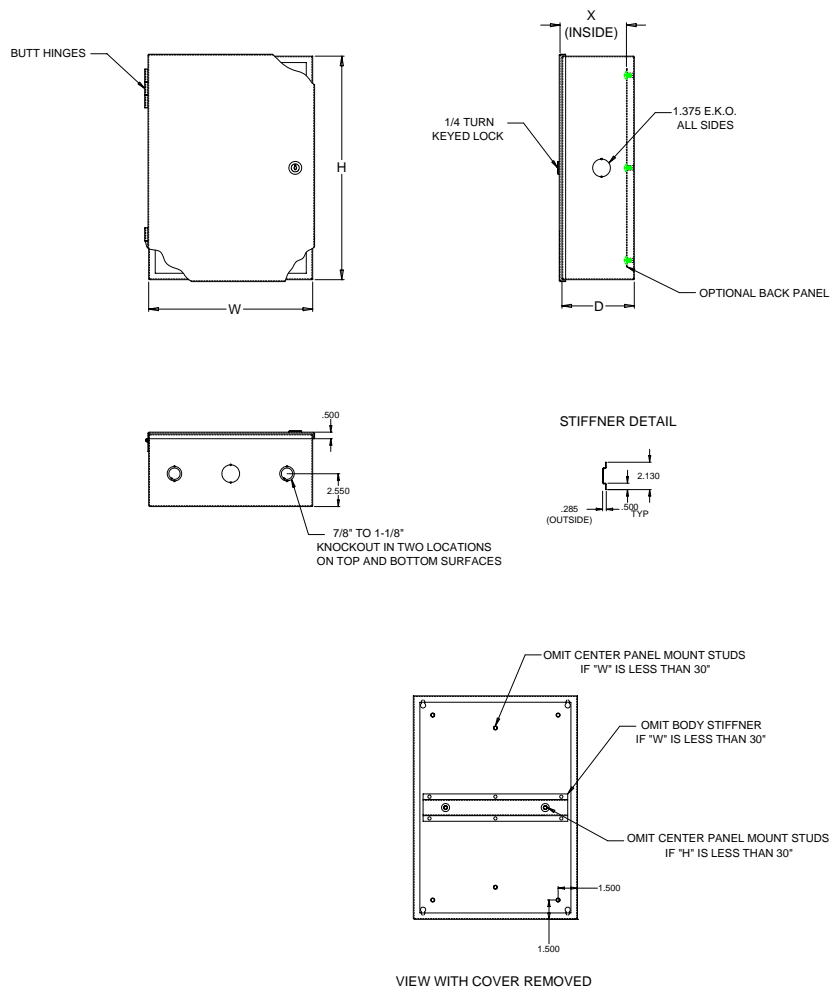
- ANSI-61 gray powder coat.

### Accessories:

- Back panels (see reference chart, pg. 6-1)

### Options:

- Custom sizes available, please call for details.
- Optional colors available, please call for details.



Phone: (716) 298-1693  
Fax: (716) 298-1696  
E-mail: [bcci@controlsconnection.com](mailto:bcci@controlsconnection.com)  
[www.controlsconnection.com](http://www.controlsconnection.com)

\*DATA SUBJECT TO CHANGE WITHOUT NOTICE

# TYPE 1 STANDARD HINGE ENCLOSURES WITH KEYED LOCK

Enclosure Catalog Number	Enclosure Size H x W x D	Body/Door Steel Gauge	X	Back Panel Catalog Number			Back Panel Size A x B	Back Panel Gauge
				PP	P2	PS		
N1-080604K	8.00" x 6.00" x 4.00"	16/16	3.515"	PP-0806	P2-0806	PS-0806	6.750" x 4.875"	14
N1-100804K	10.00" x 8.00" x 4.00"	16/16	3.515"	PP-1008	P2-1008	PS-1008	8.750" x 6.875"	14
N1-121006K	12.00" x 10.00" x 6.00"	16/16	5.515"	PP-1210	P2-1210	PS-1210	10.750" x 8.875"	14
N1-121204K	12.00" x 12.00" x 4.00"	16/16	3.515"	PP-1212	P2-1212	PS-1212	10.750" x 10.875"	14
N1-121206K	12.00" x 12.00" x 6.00"	16/16	5.515"	PP-1212	P2-1212	PS-1212	10.750" x 10.875"	14
N1-121208K	12.00" x 12.00" x 8.00"	16/16	7.515"	PP-1212	P2-1212	PS-1212	10.750" x 10.875"	14
N1-141206K	14.00" x 12.00" x 6.00"	16/16	5.515"	PP-1412	P2-1412	PS-1412	12.750" x 10.875"	14
N1-141208K	14.00" x 12.00" x 8.00"	16/16	7.515"	PP-1412	P2-1412	PS-1412	12.750" x 10.875"	14
N1-161206K	16.00" x 12.00" x 6.00"	16/16	5.515"	PP-1612	P2-1612	PS-1612	14.750" x 10.875"	14
N1-161206DK	16.00" x 12.00" x 6.625"	16/16	6.140"	PP-1612	P2-1612	PS-1612	14.750" x 10.875"	14
N1-161606DK	16.00" x 16.00" x 6.625"	16/16	6.140"	PP-1616	P2-1616	PS-1616	14.750" x 14.875"	14
N1-171205K	17.375" x 12.75" x 5.625"	16/16	5.140"	PP-1712	P2-1712	PS-1712	16.375" x 11.625"	14
N1-181606K	18.00" x 16.00" x 6.00"	16/16	5.515"	PP-1816	P2-1816	PS-1816	16.750" x 14.875"	14
N1-182006K	18.00" x 20.00" x 6.00"	16/16	5.515"	PP-1820	P2-1820	PS-1820	16.750" x 18.875"	14
N1-201606DK	20.00" x 16.00" x 6.625"	16/16	6.140"	PP-2016	P2-2016	PS-2016	18.750" x 14.875"	14
N1-201608DK	20.00" x 16.00" x 8.625"	16/14	8.140"	PP-2016	P2-2016	PS-2016	18.750" x 14.875"	14
N1-202006DK	20.00" x 20.00" x 6.625"	16/14	6.140"	PP-2020	P2-2020	PS-2020	18.750" x 18.875"	14
N1-202008DK	20.00" x 20.00" x 8.625"	16/14	8.140"	PP-2020	P2-2020	PS-2020	18.750" x 18.875"	14
N1-242006K	24.00" x 20.00" x 6.00"	16/14	5.515"	PP-2420	P2-2420	PS-2420	22.750" x 18.875"	14
N1-242006DK	24.00" x 20.00" x 6.625"	16/14	6.140"	PP-2420	P2-2420	PS-2420	22.750" x 18.875"	14
N1-242009K	24.00" x 20.00" x 9.375"	16/14	8.890"	PP-2420	P2-2420	PS-2420	22.750" x 18.875"	14
N1-242406K	24.00" x 24.00" x 6.00"	16/14	5.515"	PP-2424	P2-2424	PS-2424	22.750" x 22.875"	14
N1-242406DK	24.00" x 24.00" x 6.625"	16/14	6.140"	PP-2424	P2-2424	PS-2424	22.750" x 22.875"	14
N1-242408DK	24.00" x 24.00" x 8.625"	16/14	8.140"	PP-2424	P2-2424	PS-2424	22.750" x 22.875"	14
N1-242409K	24.00" x 24.00" x 9.375"	16/14	8.890"	PP-2424	P2-2424	PS-2424	22.750" x 22.875"	14
N1-242412K	24.00" x 24.00" x 12.625"	16/14	12.140"	PP-2424	P2-2424	PS-2424	22.750" x 22.875"	14
N1-302406DK	30.00" x 24.00" x 6.625"	16/14	6.140"	PP-3024	P2-3024	PS-3024	28.750" x 22.875"	14
N1-302408K	30.00" x 24.00" x 8.00"	16/14	7.515"	PP-3024	P2-3024	PS-3024	28.750" x 22.875"	14
N1-302408DK	30.00" x 24.00" x 8.625"	16/14	8.140"	PP-3024	P2-3024	PS-3024	28.750" x 22.875"	14
N1-302412K	30.00" x 24.00" x 12.625"	14/14	12.125"	PP-3024	P2-3024	PS-3024	28.750" x 22.875"	14
N1-353009K	35.00" x 30.00" x 9.375"	14/14	8.875"	PP-3530	P2-3530	PS-3530	33.750" x 28.875"	14
N1-362406K	36.00" x 24.00" x 6.00"	14/14	5.500"	PP-3624	P2-3624	PS-3624	34.750" x 22.875"	14
N1-362406DK	36.00" x 24.00" x 6.625"	14/14	6.125"	PP-3624	P2-3624	PS-3624	34.750" x 22.875"	14
N1-362408DK	36.00" x 24.00" x 8.625"	14/14	8.125"	PP-3624	P2-3624	PS-3624	34.750" x 22.875"	14
N1-362409K	36.00" x 24.00" x 9.375"	14/14	8.875"	PP-3624	P2-3624	PS-3624	34.750" x 22.875"	14
N1-362412K	36.00" x 24.00" x 12.625"	14/14	12.125"	PP-3624	P2-3624	PS-3624	34.750" x 22.875"	14
N1-423609K	42.00" x 36.00" x 9.375"	14/14	8.845"	PP-4236	P2-4236	PS-4236	40.750" x 34.875"	12
N1-493009K	49.25" x 30.00" x 9.375"	14/14	8.845"	PP-4930	P2-4930	PS-4930	48.000" x 28.875"	12



Phone: (716) 298-1693  
Fax: (716) 298-1696

[www.controlconnection.com](http://www.controlconnection.com)

\*DATA SUBJECT TO CHANGE WITHOUT NOTICE

# TYPE 1 ENCLOSURES WITH LIFT-OFF HINGES AND KEYED LOCK

1-6

TYPE 1 ENCLOSURES



Industry Standards  
UL 508A, Type 1  
NEMA Type 1

**UL** US LISTED  
UL File E235575

### Applications:

Designed for indoor applications, which do not have oil-tight and dust-tight requirements.

### Construction:

- Steel fabricated doors and enclosures.
- Door and body stiffeners installed when width is greater than 30 inches.
- Doors secured with lift-off hinges and keyed lock.
- Locks are keyed alike.
- Mounting holes supplied on back of enclosure.
- Enclosure/Door design allows doors to be removed.
- Standoff provided for mounting of optional back panels.
- Various sizes of knockouts are supplied on all four sides of the enclosure.

### Finish:

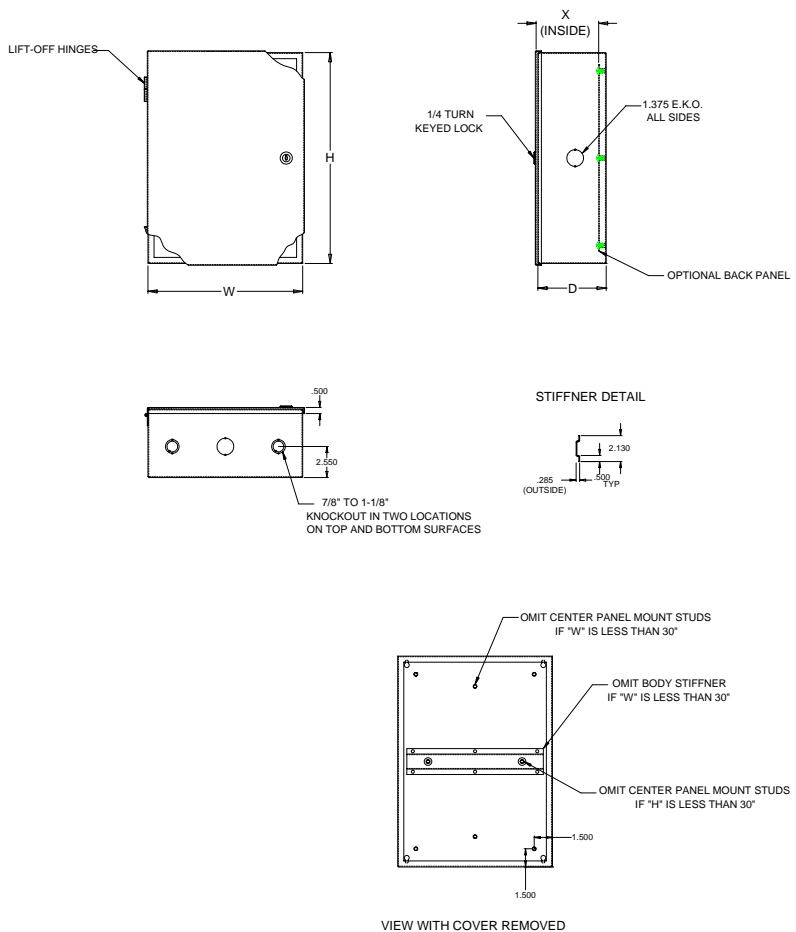
- ANSI-61 gray powder coat.

### Accessories:

- Back panels (see reference chart, pg. 6-1)

### Options:

- Custom sizes available, please call for details.
- Optional colors available, please call for details.



Phone: (716) 298-1693  
Fax: (716) 298-1696

[www.controlsconnection.com](http://www.controlsconnection.com)

\*DATA SUBJECT TO CHANGE WITHOUT NOTICE

# TYPE 1 ENCLOSURES WITH LIFT-OFF HINGES AND KEYED LOCK

Enclosure Catalog Number	Enclosure Size H x W x D	Body/Door Steel Gauge	X	Back Panel Catalog Number			Back Panel Size A x B	Back Panel Gauge
				PP-0806	P2-0806	PS-0806		
N1LR-080604K	8.00" x 6.00" x 4.00"	16/16	3.515"	PP-0806	P2-0806	PS-0806	6.750" x 4.875"	14
N1LR-100804K	10.00" x 8.00" x 4.00"	16/16	3.515"	PP-1008	P2-1008	PS-1008	8.750" x 6.875"	14
N1LR-121006K	12.00" x 10.00" x 6.00"	16/16	5.515"	PP-1210	P2-1210	PS-1210	10.750" x 8.875"	14
N1LR-121204K	12.00" x 12.00" x 4.00"	16/16	3.515"	PP-1212	P2-1212	PS-1212	10.750" x 10.875"	14
N1LR-121206K	12.00" x 12.00" x 6.00"	16/16	5.515"	PP-1212	P2-1212	PS-1212	10.750" x 10.875"	14
N1LR-121208K	12.00" x 12.00" x 8.00"	16/16	7.515"	PP-1212	P2-1212	PS-1212	10.750" x 10.875"	14
N1LR-141206K	14.00" x 12.00" x 6.00"	16/16	5.515"	PP-1412	P2-1412	PS-1412	12.750" x 10.875"	14
N1LR-141208K	14.00" x 12.00" x 8.00"	16/16	7.515"	PP-1412	P2-1412	PS-1412	12.750" x 10.875"	14
N1LR-161206K	16.00" x 12.00" x 6.00"	16/16	5.515"	PP-1612	P2-1612	PS-1612	14.750" x 10.875"	14
N1LR-161206DK	16.00" x 12.00" x 6.625"	16/16	6.140"	PP-1612	P2-1612	PS-1612	14.750" x 10.875"	14
N1LR-161606DK	16.00" x 16.00" x 6.625"	16/16	6.140"	PP-1616	P2-1616	PS-1616	14.750" x 14.875"	14
N1LR-171205K	17.375" x 12.75" x 5.625"	16/16	5.140"	PP-1712	P2-1712	PS-1712	16.375" x 11.625"	14
N1LR-181606K	18.00" x 16.00" x 6.00"	16/16	5.515"	PP-1816	P2-1816	PS-1816	16.750" x 14.875"	14
N1LR-182006K	18.00" x 20.00" x 6.00"	16/16	5.515"	PP-1820	P2-1820	PS-1820	16.750" x 18.875"	14
N1LR-201606DK	20.00" 16.00" 6.625"	16/16	6.140"	PP-2016	P2-2016	PS-2016	18.750" x 14.875"	14
N1LR-201608DK	20.00" x 16.00" x 8.625"	16/14	8.140"	PP-2016	P2-2016	PS-2016	18.750" x 14.875"	14
N1LR-202006DK	20.00" 20.00" 6.625"	16/14	6.140"	PP-2020	P2-2020	PS-2020	18.750" x 18.875"	14
N1LR-202008DK	20.00" x 20.00" x 8.625"	16/14	8.140"	PP-2020	P2-2020	PS-2020	18.750" x 18.875"	14
N1LR-242006K	24.00" x 20.00" x 6.00"	16/14	5.515"	PP-2420	P2-2420	PS-2420	22.750" x 18.875"	14
N1LR-242006DK	24.00" x 20.00" x 6.625"	16/14	6.140"	PP-2420	P2-2420	PS-2420	22.750" x 18.875"	14
N1LR-242009K	24.00" x 20.00" x 9.375"	16/14	8.890"	PP-2420	P2-2420	PS-2420	22.750" x 18.875"	14
N1LR-242406K	24.00" x 24.00" x 6.00"	16/14	5.515"	PP-2424	P2-2424	PS-2424	22.750" x 22.875"	14
N1LR-242406DK	24.00" x 24.00" x 6.625"	16/14	6.140"	PP-2424	P2-2424	PS-2424	22.750" x 22.875"	14
N1LR-242408DK	24.00" x 24.00" x 8.625"	16/14	8.140"	PP-2424	P2-2424	PS-2424	22.750" x 22.875"	14
N1LR-242409K	24.00" x 24.00" x 9.375"	16/14	8.890"	PP-2424	P2-2424	PS-2424	22.750" x 22.875"	14
N1LR-242412K	24.00" x 24.00" x 12.625"	16/14	12.140"	PP-2424	P2-2424	PS-2424	22.750" x 22.875"	14
N1LR-302406DK	30.00" x 24.00" x 6.625"	16/14	6.140"	PP-3024	P2-3024	PS-3024	28.750" x 22.875"	14
N1LR-302408K	30.00" x 24.00" x 8.00"	16/14	7.515"	PP-3024	P2-3024	PS-3024	28.750" x 22.875"	14
N1LR-302408DK	30.00" x 24.00" x 8.625"	16/14	8.140"	PP-3024	P2-3024	PS-3024	28.750" x 22.875"	14
N1LR-302412K	30.00" x 24.00" x 12.625"	14/14	12.125"	PP-3024	P2-3024	PS-3024	28.750" x 22.875"	14
N1LR-353009K	35.00" x 30.00" x 9.375"	14/14	8.875"	PP-3530	P2-3530	PS-3530	33.750" x 28.875"	14
N1LR-362406K	36.00" x 24.00" x 6.00"	14/14	5.500"	PP-3624	P2-3624	PS-3624	34.750" x 22.875"	14
N1LR-362406DK	36.00" x 24.00" x 6.625"	14/14	6.125"	PP-3624	P2-3624	PS-3624	34.750" x 22.875"	14
N1LR-362408DK	36.00" x 24.00" x 8.625"	14/14	8.125"	PP-3624	P2-3624	PS-3624	34.750" x 22.875"	14
N1LR-362409K	36.00" x 24.00" x 9.375"	14/14	8.875"	PP-3624	P2-3624	PS-3624	34.750" x 22.875"	14
N1LR-362412K	36.00" x 24.00" x 12.625"	14/14	12.125"	PP-3624	P2-3624	PS-3624	34.750" x 22.875"	14
N1LR-423609K	42.00" x 36.00" x 9.375"	14/14	8.845"	PP-4236	P2-4236	PS-4236	40.750" x 34.875"	12
N1LR-493009K	49.25" x 30.00" x 9.375"	14/14	8.845"	PP-4930	P2-4930	PS-4930	48.000" x 28.875"	12



Phone: (716) 298-1693  
 Fax: (716) 298-1696  
 E-mail: [bcc@controlsconnection.com](mailto:bcc@controlsconnection.com)  
[www.controlsconnection.com](http://www.controlsconnection.com)

# TYPE 1 SCREW COVER ENCLOSURES

1-7

TYPE 1 ENCLOSURES



Industry Standards  
UL 508A, Type 1  
NEMA Type 1



UL File E235575

### Application:

Designed for use as a junction box and pull box in general indoor applications.

### Construction:

- Steel fabricated enclosure and cover
- Mounting holes supplied on back of enclosure.
- Various sizes of knockouts are supplied on all four sides of the enclosure (see drawing for knockout pattern).
- Cover design allows for removal without fully removing screws.
- Cover secured with plated steel screws.

### Finish:

- ANSI 61 gray powder coating inside and out over phosphatized surfaces.

### Options:

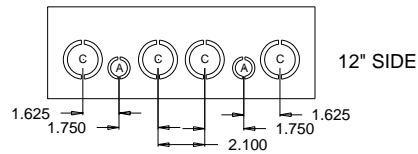
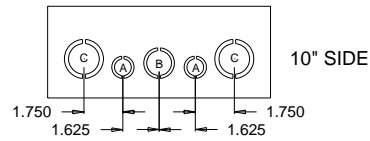
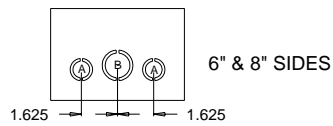
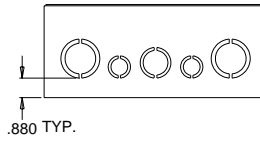
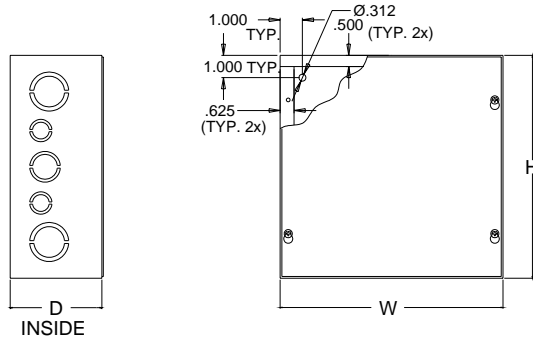
- Custom sizes and colors available. Please call for details.

Enclosure Catalog Number	Enclosure Size H x W x D	Body/Door Steel Gauge
SC-040404	4.00" x 4.00" x 4.00"	16/16
SC-060604	6.00" x 6.00" x 4.00"	16/16
SC-080804	8.00" x 8.00" x 4.00"	16/16
SC-101004	10.00" x 10.00" x 4.00"	16/16
SC-121204	12.00" x 12.00" x 4.00"	16/16
SC-060606	6.00" x 6.00" x 6.00"	16/16
SC-080806	8.00" x 8.00" x 6.00"	16/16
SC-101006	10.00" x 10.00" x 6.00"	16/16
SC-121206	12.00" x 12.00" x 6.00"	16/16



Phone: (716) 298-1693  
Fax: (716) 298-1696  
E-mail: [bcci@controlsconnection.com](mailto:bcci@controlsconnection.com)  
[www.controlsconnection.com](http://www.controlsconnection.com)

# TYPE 1 SCREW COVER ENCLOSURES



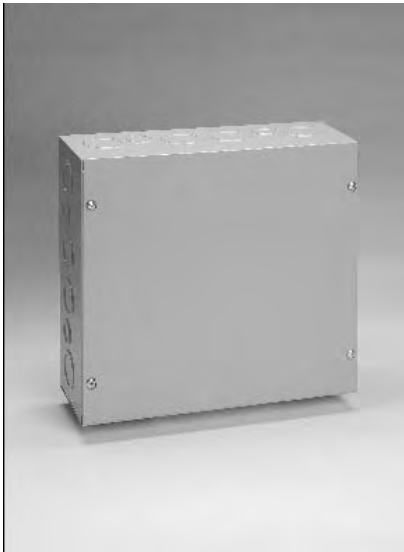
Phone: (716) 298-1693  
 Fax: (716) 298-1696

[www.controlconnection.com](http://www.controlconnection.com)

# TYPE 1 SCREW COVER ENCLOSURES WITH PERFORATED BACK PANELS

1-8

TYPE 1 ENCLOSURES



Industry Standards  
UL 508A, Type 1  
NEMA Type 1



UL File E235575

## Application:

Designed for use as a junction box and pull box in general indoor applications.

## Construction:

- Steel fabricated enclosure and cover
- Mounting holes supplied on back of enclosure.
- Various sizes of knockouts are supplied on all four sides of the enclosure (see drawing for knockout pattern).
- Cover design allows for removal without fully removing screws.
- Cover secured with plated steel screws.
- Standoffs provided for mounting fully perforated back panel.
- Back panel is constructed of 14 gauge fully perforated mild steel.

## Finish:

- ANSI 61 gray powder coating inside and out over phosphatized surfaces. Panels are powder coated white.

## Options:

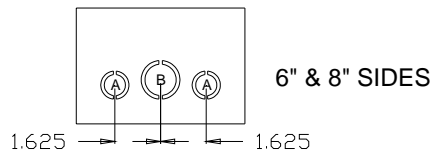
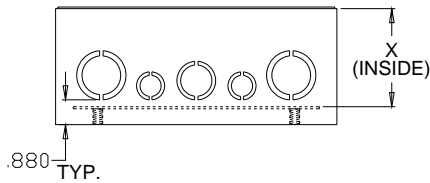
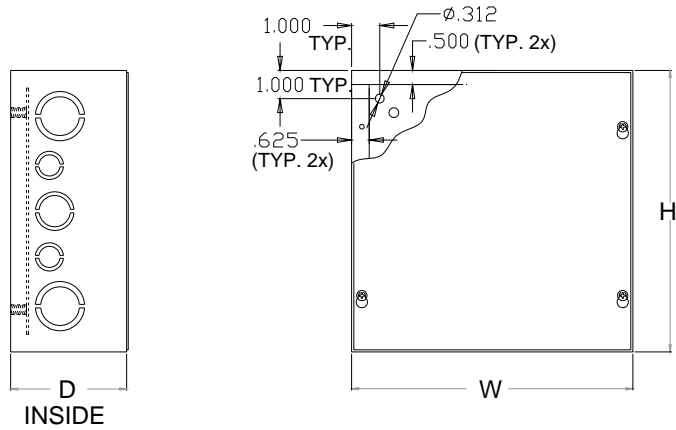
- Custom sizes and colors available. Please call for details.

Enclosure Catalog Number	Enclosure Size H x W x D	Body/Door Steel Gauge	X
SC-060604H	6.00" x 6.00" x 4.00"	16/16	3.363"
SC-080804H	8.00" x 8.00" x 4.00"	16/16	3.363"
SC-101004H	10.00" x 10.00" x 4.00"	16/16	3.363"
SC-121204H	12.00" x 12.00" x 4.00"	16/16	3.363"
SC-060606H	6.00" x 6.00" x 6.00"	16/16	5.363"
SC-080806H	8.00" x 8.00" x 6.00"	16/16	5.363"
SC-101006H	10.00" x 10.00" x 6.00"	16/16	5.363"
SC-121206H	12.00" x 12.00" x 6.00"	16/16	5.363"

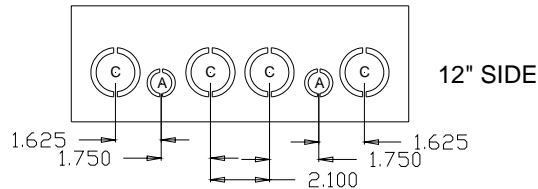
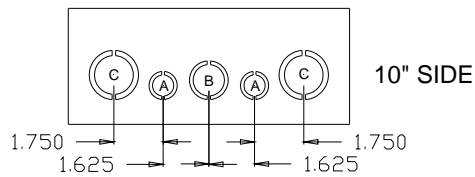


Phone: (716) 298-1693  
 Fax: (716) 298-1696  
 E-mail: [bcci@controlsconnection.com](mailto:bcci@controlsconnection.com)  
[www.controlsconnection.com](http://www.controlsconnection.com)

# TYPE 1 SCREW COVER ENCLOSURES WITH PERFORATED BACK PANELS



KNOCKOUT SIZE CHART (CONDUIT SIZE)	
A	1/2" - 3/4"
B	3/4" - 1"
C	1" - 1-1/4"



Phone: (716) 298-1693  
 Fax: (716) 298-1696  
 E-mail: [bcci@controlsconnection.com](mailto:bcci@controlsconnection.com)  
[www.controlsconnection.com](http://www.controlsconnection.com)

# BACK PANELS FOR TYPE 1 & JIC ENCLOSURES

PERFORATED BACK PANELS	
CATALOG NUMBER	PANEL SIZE A x B
PP-0806	6.750" x 4.875"
PP-1008	8.750" x 6.875"
PP-1210	10.750" x 8.875"
PP-1212	10.750" x 10.875"
PP-1412	12.750" x 10.875"
PP-1612	14.750" x 10.875"
PP-1614	14.750" x 12.875"
PP-1616	14.750" x 14.875"
PP-1712	16.375" x 11.625"
PP-1816	16.750" x 14.875"
PP-1820	16.750" x 18.875"
PP-2016	18.750" x 14.875"
PP-2020	18.750" X18.875"
PP-2420	22.750" x 18.875"
PP-2424	22.750" x 22.875"
PP-3024	28.750" x 22.875"
PP-3530	33.750" x 28.875"
PP-3624	34.750" x 22.875"
PP-4236**	40.750" x 34.875"
PP-4930**	48.000" x 28.875"

2" ON CENTER BACK PANELS	
CATALOG NUMBER	PANEL SIZE A x B
P2-0806	6.750" x 4.875"
P2-1008	8.750" x 6.875"
P2-1210	10.750" x 8.875"
P2-1212	10.750" x 10.875"
P2-1412	12.750" x 10.875"
P2-1612	14.750" x 10.875"
P2-1614	14.750" x 12.875"
P2-1616	14.750" x 14.875"
P2-1712	16.375" x 11.625"
P2-1816	16.750" x 14.875"
P2-1820	16.750" x 18.875"
P2-2016	18.750" x 14.875"
P2-2020	18.750" X18.875"
P2-2420	22.750" x 18.875"
P2-2424	22.750" x 22.875"
P2-3024	28.750" x 22.875"
P2-3530	33.750" x 28.875"
P2-3624	34.750" x 22.875"
P2-4236**	40.750" x 34.875"
P2-4930**	48.000" x 28.875"

SOLID BACK PANELS	
CATALOG NUMBER	PANEL SIZE A x B
PS-0806	6.750" x 4.875"
PS-1008	8.750" x 6.875"
PS-1210	10.750" x 8.875"
PS-1212	10.750" x 10.875"
PS-1412	12.750" x 10.875"
PS-1612	14.750" x 10.875"
PS-1614	14.750" x 12.875"
PS-1616	14.750" x 14.875"
PS-1712	16.375" x 11.625"
PS-1816	16.750" x 14.875"
PS-1820	16.750" x 18.875"
PS-2016	18.750" x 14.875"
PS-2020	18.750" X18.875"
PS-2420	22.750" x 18.875"
PS-2424	22.750" x 22.875"
PS-3024	28.750" x 22.875"
PS-3530	33.750" x 28.875"
PS-3624	34.750" x 22.875"
PS-4236**	40.750" x 34.875"
PS-4930**	48.000" x 28.875"

**Construction:**

- 14 gauge carbon steel (unless otherwise noted).
- \*\* denotes 12 gauge material.
- Fully perforated.

**Finish:**

- White powder coat.

**Construction:**

- 14 gauge carbon steel (unless otherwise noted).
- \*\* denotes 12 gauge material.
- Holes spaced 2" on center.

**Finish:**

- White powder coat.

**Options:**

- Optional materials available, please call for details.

**Construction:**

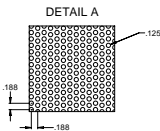
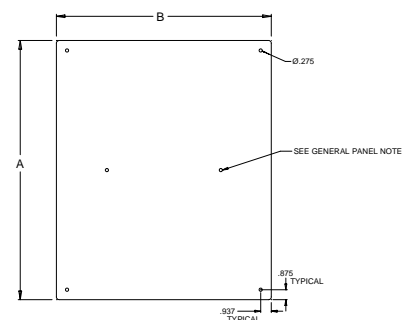
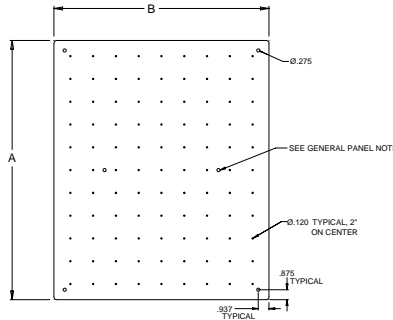
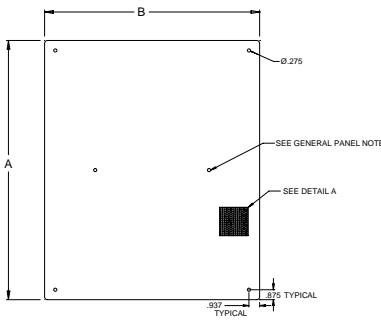
- 14 gauge carbon steel (unless otherwise noted).
- \*\* denotes 12 gauge material.

**Finish:**

- White powder coat.

**Options:**

- Optional materials available, please call for details.



**NOTE:** OMIT CENTER HOLES IF "A" AND "B" ARE LESS THAN 30".



Phone: (716) 298-1693  
 Fax: (716) 298-1696  
 E-mail: [bcci@controlsconnection.com](mailto:bcci@controlsconnection.com)  
[www.controlsconnection.com](http://www.controlsconnection.com)