

# SPECIALTY SENSORS



## SPECIALTY SENSORS

Water Detector (WD) Series	77
High Visibility LED Display (RD) Series	78
Transformers Series	80



**“These large and bright color displays can be seen all the way across the room!”**

### Reading air quality levels shouldn't be a guessing game

Our designer LED (RD) series feature large and bright numbers in 3 colors to choose from (red, green and blue) and can be seen across the room. Never squint again trying to guess room humidity and temperature levels.



### A spot leak detector that's easy to install and cost effective

Protect vital components from water damage with our WD series spot leak detector. The WD series utilizes solid state detection, so it is not prone to mechanical failure.

### Adding transformers to your order saves you time and shipping costs

Our transformer series with integrated circuit breakers make ordering a breeze, allowing you to add an accessory you already need on to your order without cutting additional purchase orders and paying additional shipping costs.



# Surface mount Water Sensor

Soild state  
Gold plated sensing electrodes



## DESCRIPTION

The WD series detects water to prevent costly damage. Unlike float systems, it utilizes solid state detection, so is not prone to mechanical failure.

## APPLICATIONS

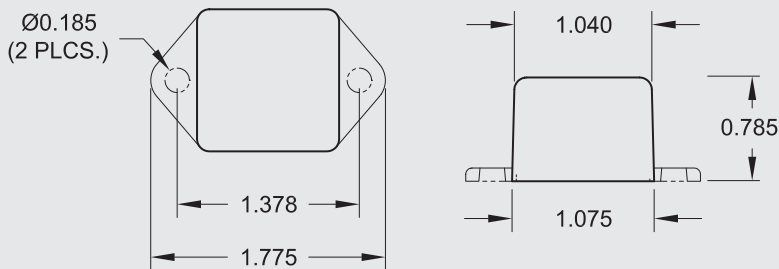
- Ideal for spot leak detection
- Computer rooms, critical equipment
- Monitor condensate pans and drains—turn of equipment when pans reach limit

## FEATURES

### Reliable water detection

- Simple installation—screw, or ram-set to floor or drip pan
- Simple operation—no maintenance
- Solid-state design... no moving parts to fail
- Fully potted for water-proofing... maximum durability

### Dimensions



## ORDERING

**WD-1** Water Detector, 9-30 VAC/DC



## SPECIFICATIONS

Power Supply	9-30VAC/DC, 10mA Max.
Output	N.C. (Form B) Solid State Relay, Isolated
Output Rating	30VAC/DC, 0.1A (100mA) Max.
Sensing	Gold plated electrodes
Operating Environment	-20 to 80C

## Large LED Remote Displays

3 1/2 digit LED  
Choose Red, green, or blue  
Adjustable zero and span



### DESCRIPTION

These large bright displays are ideal for visual feedback of any measured value. Humidity, temperature, and pressure labels provided—others available—consult factory.

### APPLICATIONS

- Provides users with valuable visual verification of humidity and/or temperature status
- Process control feedback, including pharmaceutical, food, and coating applications

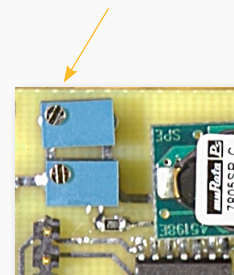
### FEATURES

#### Easy to install and maintain

- Fits standard single or double gang boxes (depending on version)
- Accepts 0-10V input signal
- Pre-cut vinyl labels provided with temperature, pressure, humidity for each display ordered.
- Factory scaled; user adjustable zero and span

#### Field Adjustable

- Adjust the scaling—both zero and span, for any application requirement.



## ORDERING

	type	#1 col	#2 col
RD	<input type="text"/>	<input type="text"/>	<input type="text"/>

**Display Type**  
 1 = Single Gang  
 2 = Double Gang

**Display #1 LED Color**  
 A = Blue  
 B = Green  
 C = Red

**Display #2 LED Color**  
 A = Blue  
 B = Green  
 C = Red  
 D = None

Consult factory for custom labeling and calibrations

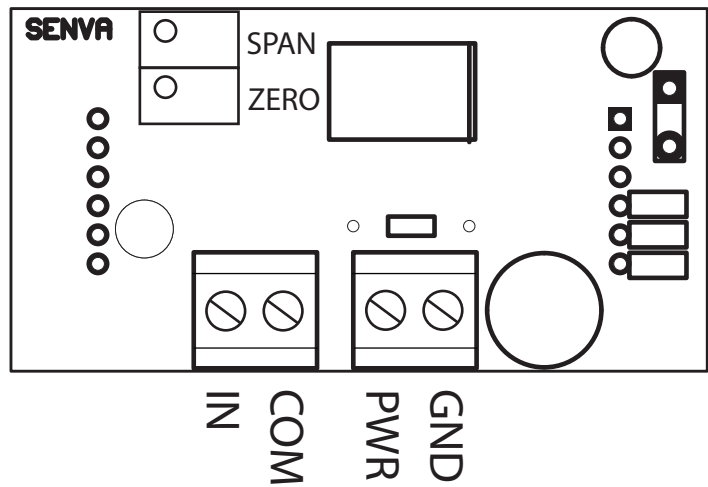
(Write your selected Display Type, Display #1 and #2 LED Color numbers/letters in the boxes above)

## SPECIFICATIONS

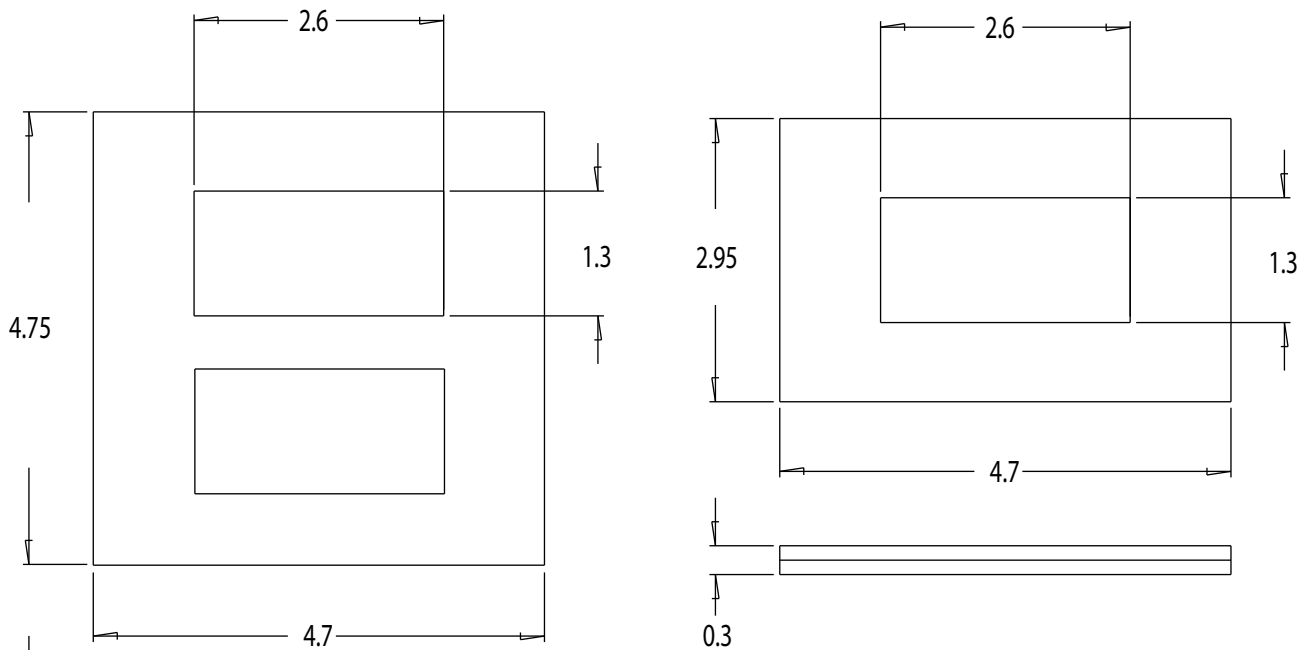
Power supply	12-30VDC/24VAC <sup>(1)</sup> , 40mA max. (per display)
Signal input range	0-10VDC
Scaling	Factory set for customer application
	Field adjustable zero and span
Display type	3-1/2 digit LED; Red, Green, or Blue
Accuracy	+/-1% F.S. +/- 2 counts
Sampling Rate	3 / second
Input Impedance	100k ohm
Operating Temperature	32-122oF (0-50oC)

(1) One side of transformer, secondary is connected to signal common. Dedicated transformer is recommended.

## WIRING (PER DISPLAY)

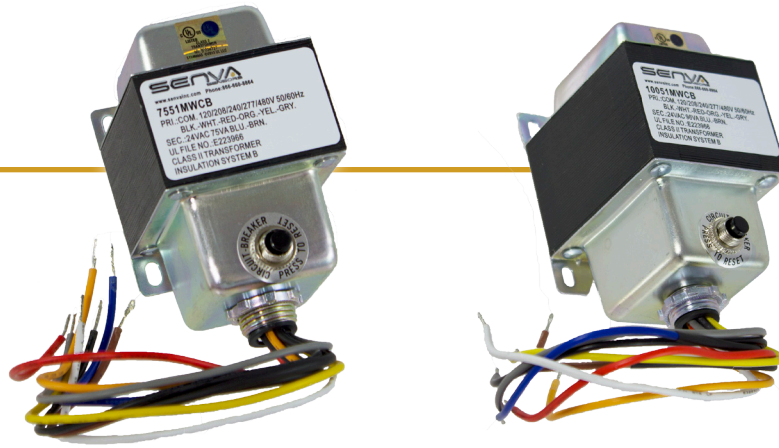


## DIMENSIONS



# Panel Mount Multi-tap Class 2 Transformers

120, 208, 240, 277, 480 primary inputs  
50, 75, and 96VA models  
Integrated overcurrent breaker



## SPECIFICATIONS

UNIT: Inch±0.04

Model#	VA	PRI(VAC)	HZ	SEC	Over Current Protection	UL MARK	CE MARK	TYPE	A	B	C	D	E
5051MWCB	50	120/208/240/277/480	50/60	24	Circuit Breaker			A.B.C	1.26"	1.91"	3.45"	2.5"	3.06"
7551MWCB	75	120/208/240/277/480	50/60	24	Circuit Breaker			A.B.C	1.67"	2.31"	3.87"	2.5"	3.06"
10051MWCB	96	120/208/240/277/480	50/60	24	Circuit Breaker			A.B.C	2.06"	2.69"	4.25"	2.5"	3.06"



**UL Component Recognized, U.S. and Canada**  
**CE: Conformance Européenne**

## DIMENSIONS

