

## General Purpose Type 1 Enclosures with Knockouts

### Application-

Designed to house electrical controls, instruments and components in areas that do not require oil, water and dust tight protection. For installation information, consult our Installation Manual at [www.saginawcontrol.com](http://www.saginawcontrol.com).

### Construction -

- 0.048", 0.063" & 0.075" carbon steel depending on its size.
- Spot weld construction.
- Knockouts provided in the top, bottom, right and left side.
- Standoffs provided for mounting optional sub-panels.
- Butt hinge.
- Doors open 180 degrees.
- Keylocking quarter turn latch.
- Ground stud on door and body.
- Mounting holes in back of enclosure.
- Sub-panel with 2" x 2" mounting grid pattern included.

### Options -

Optional mounting feet available.

### Finish -

Precaution Blue, Safety Orange or Taupe  
Tan powder coat finish inside and out.  
Sub-panels powder coated white.

### IS8 - Industry Standards -

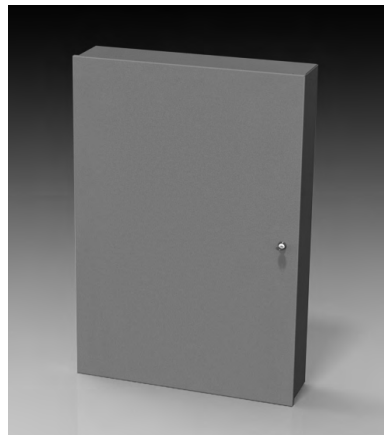
NEMA Type 1  
UL Listed Type 1  
CSA Type 1  
IEC 60529 IP30

## GENERAL PURPOSE TYPE 1 ENCLOSURES WITH KNOCKOUTS

ENCLOSURE PRODUCT CODE N1						SUB-PANEL (N1)		
Catalog No.	Height (A)	Width (B)	Depth (C)	Industry Standard	List Price	Panel Height (D)	Panel Width (E)	List Price
SCE-18N1606NK-T	18.00	16.00	6.00	IS8	128.86	16.006.00	14.00.00	Incl120.55
SCE-18N1606NK-B	18.00	16.00	6.00	IS8	128.86	16.006.00	14.00.00	Incl120.55
SCE-18N1606NK-O	18.00	16.00	6.00	IS8	128.86	16.006.00	14.00.00	Incl120.55
SCE-24N2006NK-T	24.00	20.00	6.00	IS8	152.30	22.002.00	18.00.00	Incl150.55
SCE-24N2006NK-B	24.00	20.00	6.00	IS8	152.30	22.002.00	18.00.00	Incl150.55
SCE-24N2006NK-O	24.00	20.00	6.00	IS8	152.30	22.002.00	18.00.00	Incl150.55
SCE-36N2406NK-T	36.00	24.00	6.00	IS8	234.30	34.004.00	22.00.00	Incl180.50
SCE-36N2406NK-B	36.00	24.00	6.00	IS8	234.30	34.004.00	22.00.00	Incl180.50

\*NL - Non UL Listed 16 ga enclosures.

**Note:** Part Numbers ending in the letter:  
(B) Precaution Blue  
(O) RAL 8023 Orange  
(T) Taupe Tan

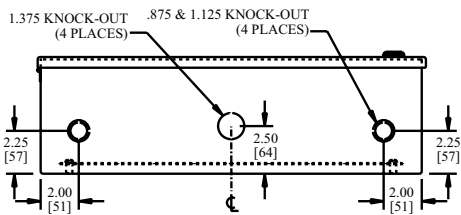
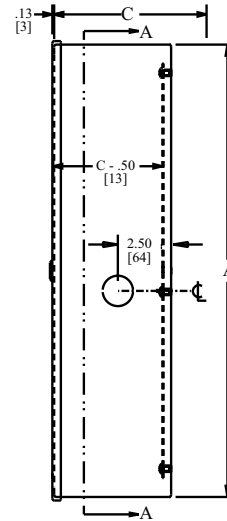
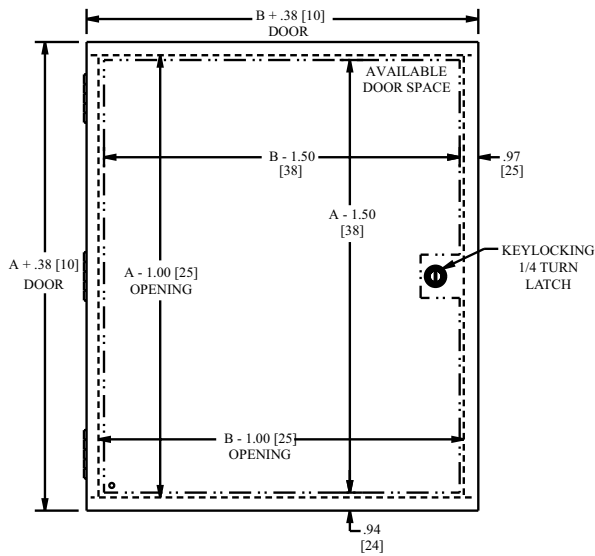


Phone (989) 799-6871  
Fax (989) 799-4524

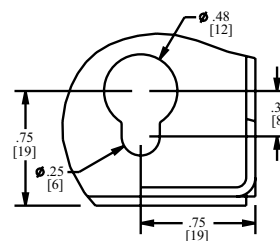
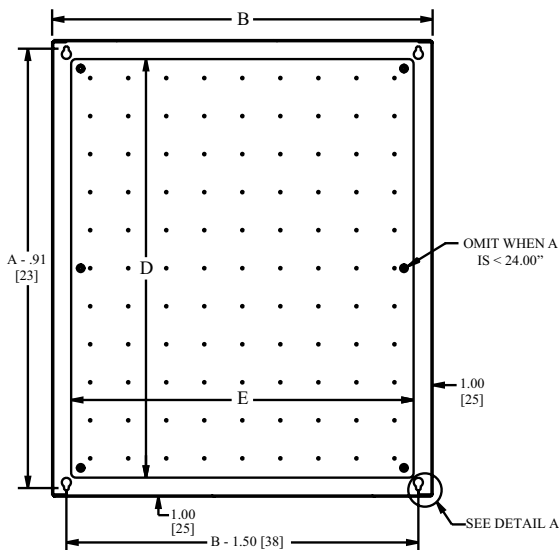


# GENERAL PURPOSE TYPE 1 ENCLOSURES WITH KNOCKOUTS

## TECHNICAL DATA



**CONSTRUCTION NOTES:**  
 Enclosures < 24.00" [610] wide are made of 0.060" [2] material.  
 Enclosures => 24.00" [610] wide are made of 0.075" [2] material.



DETAIL A

SECTION A-A