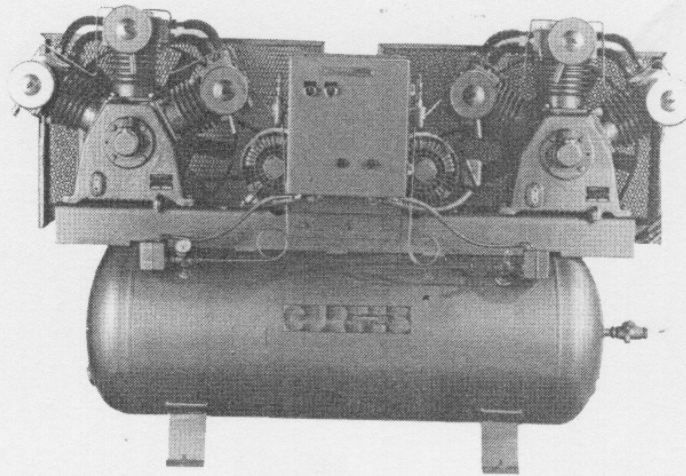


• CURTIS

The Symbol of Quality and Excellence Since 1854

- SUBMITTAL DATA -

CLIMATE CONTROL COMPRESSORS



**Providing Clean,
Dry Air for Instrument
Control Equipment**

CURTIS SIMPLEX SPECIFICATIONS

Curtis Simplex Compressors

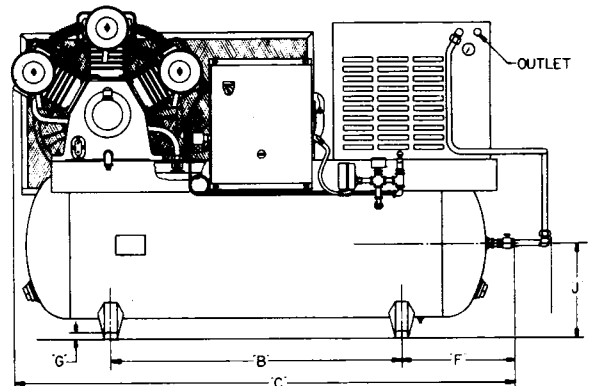
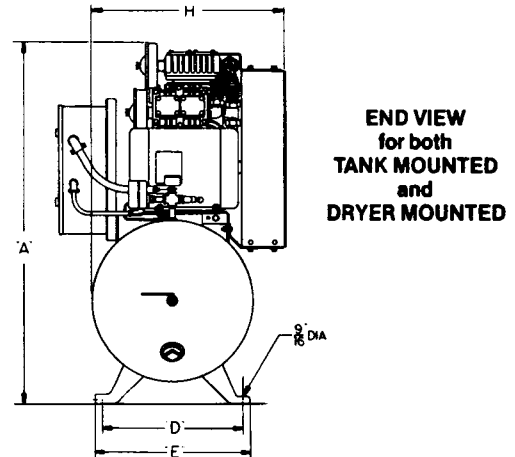
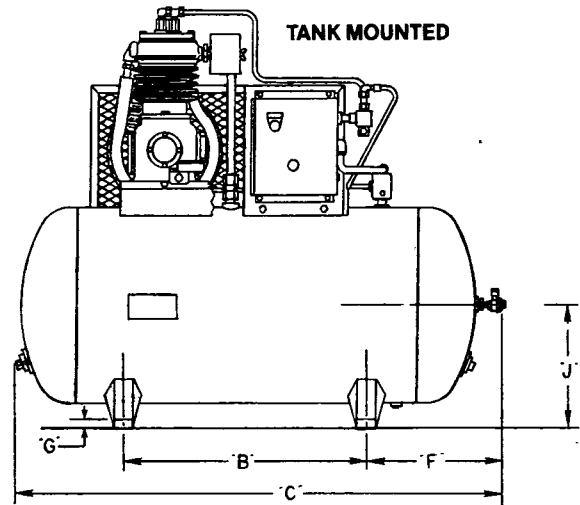
Standard Equipment

- Large Intake Filter Silencer.
- ASME National Board Stamped Receiver.
- ASME Safety Relief Valve.
- Pressure Gage.
- Receiver Condensate Drain Valve.
- Discharge Line Check Valve.
- Receiver Shut-Off Valve.
- V-Belt Drive.
- NEMA Motors and Pressure Switches.
- OSHA Totally Enclosed Steel Belt Guard.
- Crankcase Lubrication Level Indicator.
- Pressure Switch Operated Automatic Start and Stop Control (Set 80 PSI).

Optional Accessories

- Magnetic Motor Starters With Overload Protection and On/Off Switch.
- Discharge Air Coalescer Filters.
- Low Oil Level Shutdown.*
- Automatic Condensate Traps.
- Air-Cooled Aftercoolers.
- Refrigerated Dryers.
- Isolator Pads.
- Spring Isolators.
- PRV Station.

Above items can be factory mounted and wired.



- Contact factory for specific compressor availability. Refer to Simplex Specification for dimensions and available receiver sizes. Refer to required HP listed under Simplex Specifications for RPM and CFM.

Specifications for SIMPLEX TANK MOUNTED Compressors

MODEL	MOTOR H.P.	RPM	CFM AT 80 PSI	TANK SIZE		DIMENSIONS									EST. WT. LBS.	DIS- CHARGE NPT
				INCHES	GALS	A	B	C	D	E	F	G	H	J		
2SA2	1/3	460	1.7	14x33	20	30 1/4	18	36 1/2	14	16	11	3/16	14	10	140	3/8"
3SA2	1/3	460	1.7	16x38	30	32 1/4	23	41 1/2	14	16	11	3/16	16	11	160	
2SA3	1/2	530	2.1	14x33	20	30 1/4	18	36 1/2	14	16	11	3/16	14	10	145	
3SA3	1/2	530	2.1	16x38	30	32 1/4	23	41 1/2	14	16	11	3/16	16	11	165	
3SF4	3/4	460	3.2	16x38	30	33 3/4	23	41 1/2	14	16	11	3/16	18 3/16	11	175	1/2"
3SG5	1	490	4.1	16x38	30	35 3/8	23	41 1/2	14	16	11	3/16	19	11	220	
6SG5	1	490	4.1	20x48	60	39 5/8	28	51 1/2	18 1/2	20 1/2	13 1/2	3/16	20	12 7/8	305	
3SH6	1 1/2	580	6.0	16x38	30	35 3/8	23	41 1/2	14	16	11	3/16	19	11	220	
6SH6	1 1/2	580	6.0	20x48	60	39 5/8	28	51 1/2	18 1/2	20 1/2	13 1/2	3/16	20	12 7/8	310	
8SH6	1 1/2	580	6.0	20x63	80	39 5/8	40	66 1/2	18 1/2	20 1/2	15	1/4	20	12 7/8	390	
6SJ7	2	490	7.5	20x48	60	40 7/8	28	51 1/2	18 1/2	20 1/2	13 1/2	3/16	20	12 7/8	350	
8SJ7	2	490	7.5	20x63	80	40 7/8	40	66 1/2	18 1/2	20 1/2	15	1/4	20	12 7/8	410	
6SN8	3	495	11.3	20x48	60	43 3/8	28	51 1/2	18 1/2	20 1/2	13 1/2	3/16	20 3/4	12 7/8	415	
8SN8	3	495	11.3	20x63	80	43 3/8	40	66 1/2	18 1/2	20 1/2	15	1/4	20 3/4	12 7/8	480	
8SN9	5	650	15.2	20x63	80	43 3/8	40	66 1/2	18 1/2	20 1/2	15	1/4	20 3/4	12 7/8	475	
12SN9	5	650	15.2	24x68	120	48 7/8	40	71 1/2	18 1/4	20 1/2	17 1/2	3/8	24	16	690	
8SS9	5	550	17.5	20x63	80	45 3/8	40	67	18 1/2	20 1/2	15 1/2	1/4	24 3/8	12 7/8	630	
12SS9	5	550	17.5	24x68	120	51 1/4	40	72	18 1/4	20 1/2	18	3/8	24 3/8	16	800	
8ST10	7 1/2	680	29.7	20x63	80	45 3/8	40	67	18 1/2	20 1/2	15 1/2	1/4	24 3/8	12 7/8	655	3/4"
12ST10	7 1/2	680	29.7	24x68	120	51 1/4	40	72	18 1/4	20 1/2	18	3/8	24 3/8	16	850	
20ST10	7 1/2	680	29.7	30x72	200	58	40	76	28	30 1/2	20	3/8	30	19	1050	
12SW11	10	560	37.6	24x68	120	57 1/4	40	72	18 1/4	20 1/2	18	3/8	24 1/4	16	1005	
20SW11	10	560	37.6	30x72	200	64	40	76	28	30 1/2	20	3/8	30	19	1205	
20SZ12	15	650	67.4	30x72	200	74 1/4	42	76 1/2	40	42 1/2	19 1/2	1/2	43 1/4	19	1750	
20SZ13	20	795	82.2	30x72	200	74 1/4	42	76 1/2	40	42 1/2	19 1/2	1/2	43 1/4	19	1800	1"
20SZ14	25	940	92.7	30x72	200	74 1/4	42	76 1/2	40	42 1/2	19 1/2	1/2	43 1/4	19	2050	

Specifications for SIMPLEX DRYER MOUNTED Compressors

MODEL	MOTOR H.P.	RPM	CFM AT 80 PSI	TANK SIZE		DIMENSIONS									EST. WT. LBS.	DIS- CHARGE
				INCHES	GALS	A	B	C	D	E	F	G	H	J		
3SA2-D	1/3	460	1.7	16x38	30	32 1/4	23	49 1/2	14	16	11	3/16	16	11	215	3/8" O.D. (Tube Size)
3SA3-D	1/2	530	2.1	16x38	30	32 1/4	23	49 1/2	14	16	11	3/16	16	11	220	
3SF4-D	3/4	460	3.2	16x38	30	33 3/4	23	56	14	16	11	3/16	18 3/8	11	230	
6SG5-D	1	490	4.1	20x48	60	39 3/8	28	60 1/4	18 1/2	20 1/2	13 1/2	3/16	20	12 7/8	275	
6SH6-D	1 1/2	580	6.0	20x48	60	39 3/8	28	60 1/4	18 1/2	20 1/2	13 1/2	3/16	20	12 7/8	300	
6SJ7-D	2	490	7.5	20x48	60	40 7/8	28	69 1/2	18 1/2	20 1/2	13 1/2	3/16	20	12 7/8	405	
8SJ7-D	2	490	7.5	20x63	80	40 7/8	40	69 1/2	18 1/2	20 1/2	15	1/4	20	12 7/8	465	
8SN8-D	3	495	11.3	20x63	80	43 3/8	40	72 3/4	18 1/2	20 1/2	15	1/4	20 3/4	12 7/8	535	
8SN9-D	5	650	15.2	20x63	80	43 3/8	40	72 3/4	18 1/2	20 1/2	15	1/4	20 3/4	12 7/8	550	
12SN9-D	5	650	15.2	24x68	120	48 7/8	40	77 3/4	18 1/4	20 1/2	17 1/2	3/8	24	16	745	
12SS9-D	5	550	17.5	24x68	120	51 1/4	40	82 1/2	18 1/4	20 1/2	18	3/8	24 3/8	16	855	

CURTIS

Since 1854

CURTIS DUPLEX SPECIFICATIONS

- When Large Amounts of Air are Needed.
- Alternating Operation for Greater Efficiency.
- Uninterrupted Service During Compressor Maintenance.

Curtis Duplex Compressors

Standard Equipment

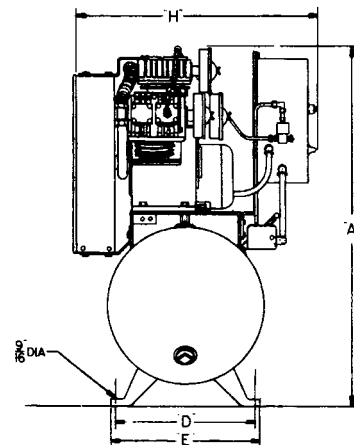
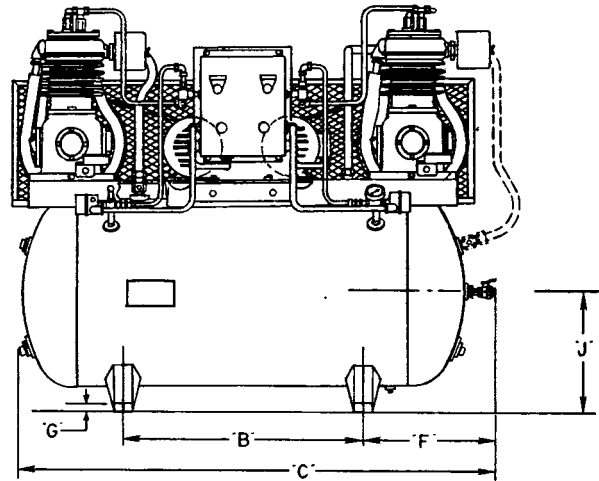
- Large Intake Filter Silencer.
- ASME National Board Stamped Receiver.
- ASME Safety Relief Valve.
- Pressure Gage.
- Receiver Condensate Drain Valve.
- Discharge Line Check Valve.
- Receiver Shut-Off Valve.
- V-Belt Drive.
- NEMA Motors and Pressure Switches.
- OSHA Totally Enclosed Steel Belt Guard.
- Crankcase Lubrication Level Indicator.
- Pressure Switch Operated Automatic Start and Stop Control (Set 80 PSI).

Optional Accessories

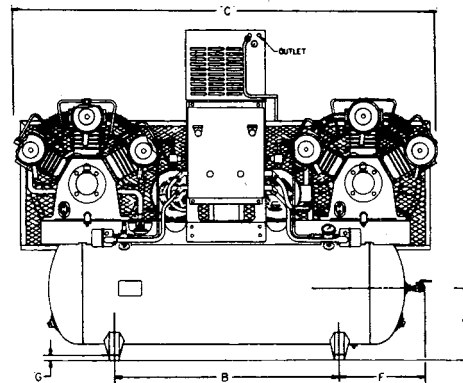
- Magnetic Motor Starters With Overload Protection and On/Off Switch.
- Discharge Air Coalescer Filters.
- Low Oil Level Shutdown.*
- Automatic Condensate Traps.
- Air-Cooled Aftercoolers.
- Refrigerated Dryers.
- Alternator Panels: Provides Equal Utilization of Compressors to Minimize Maintenance Downtime. Note: starters are mounted inside alternator panel.
- Isolator Pads.
- Spring Isolators.
- PRV Station.

* Contact factory for specific compressor availability.

Above items can be factory mounted and wired.



END VIEW
for both
TANK MOUNTED
and
DRYER MOUNTED



Specifications for DUPLEX TANK MOUNTED Compressors

MODEL	MOTOR H.P. (2)	RPM	CFM AT 80 PSI	TANK SIZE		DIMENSIONS										EST. WT. LBS.	DIS-CHARGE NPT
				INCHES	GALS	A	B	C	D	E	F	G	H	J			
3DA2	1/3	460	1.7	16x38	30	44	23	49 1/2	14	16	11	3/16	24 5/8	11	220	3/8"	
3DA3	1/2	530	2.1	16x38	30	44	23	49 1/2	14	16	11	3/16	24 5/8	11	255		
6DA3	1/2	530	2.1	20x48	60	48 1/4	8	51 1/2	18 1/2	20 1/2	13 1/2	3/16	24 3/4	12 7/8	350		
3DF4	3/4	460	3.2	16x38	30	41 1/4	23	56	14	16	11	3/16	22 3/8	11	285	1/2"	
6DF4	3/4	460	3.2	20x48	60	45 1/2	28	56	18 1/2	20 1/2	13 1/2	3/16	22 1/2	12 7/8	390		
6DG5	1	490	4.1	20x48	60	45 1/2	28	60 1/4	18 1/2	20 1/2	13 1/2	3/16	22 1/2	12 7/8	470		
8DG5	1	490	4.1	20x63	80	45 1/2	40	66 1/2	18 1/2	20 1/2	15	1/4	22 1/2	12 7/8	530		
6DH6	1 1/2	580	6.0	20x48	60	45 1/2	28	60 1/4	18 1/2	20 1/2	13 1/2	3/16	22 1/2	12 7/8	465		
8DH6	1 1/2	580	6.0	20x63	80	45 1/2	40	66 1/2	18 1/2	20 1/2	15	1/4	22 1/2	12 7/8	535		
6DJ7	2	490	7.5	20x48	60	45 1/2	28	69 1/2	18 1/2	20 1/2	13 1/2	3/16	23 1/4	12 7/8	490		
8DJ7	2	490	7.5	20x63	80	45 1/2	40	69 1/2	18 1/2	20 1/2	15	1/4	23 1/4	12 7/8	615		
8DN8	3	495	11.3	20x63	80	45 1/2	40	72 3/4	18 1/2	20 1/2	15	1/4	24	12 7/8	725		
12DN8	3	495	11.3	24x68	120	50 1/2	40	72 3/4	18 1/4	20 1/2	17 1/2	3/8	25 1/4	16	940		
12DN9	5	650	15.2	24x68	120	50 1/2	40	72 3/4	18 1/4	20 1/2	17 1/2	3/8	25 1/4	16	970	3/4"	
12DS9	5	550	17.5	24x68	120	51 1/4	40	82 1/2	18 1/2	20 1/2	18	3/8	30	16	1185		
20DS9	5	550	17.5	30x72	200	58	40	82 1/2	28	30 1/2	20	3/8	30 1/4	19	1400		
20DT10	7 1/2	680	29.7	30x72	200	58	40	82 1/2	28	30 1/2	20	3/8	30	19	1475		
20DW11	10	560	37.6	30x72	200	64	40	87 1/2	28	30 1/2	20	3/8	30 1/4	19	1755	1"	
24DZ12	15	650	67.4	30x84	240	74 1/4	54	94	40	42 1/2	19 1/2	1/2	44	19	2900		
24DZ13	20	795	82.2	30x84	240	74 1/4	54	94	40	42 1/2	19 1/2	1/2	44	19	2900		
24DZ14	25	935	92.7	30x84	240	74 1/4	54	94	40	42 1/2	19 1/2	1/2	44	19	3750		

* Includes alternator panel. For dimensions without panel, refer to Simplex Specifications.

Specifications for DUPLEX DRYER MOUNTED Compressors

MODEL	MOTOR H.P. (2)	RPM	CFM AT 80 PSI	TANK SIZE		DIMENSIONS										EST. WT. LBS.	DIS-CHARGE
				INCHES	GALS	A	B	C	D	E	F	G	H	J			
6DA2-D	1/3	460	1.7	20x48	60	58 1/4	28	51 1/2	18 1/2	20 1/2	13 1/2	3/16	24 3/4	12 7/8	275	3/8" O.D. (Tube Size)	
6DA3-D	1/2	530	2.1	20x48	60	58 1/4	28	51 1/2	18 1/2	20 1/2	13 1/2	3/16	24 3/4	12 7/8	405		
6DF4-D	3/4	460	3.2	20x48	60	55 1/2	28	56	18 1/2	20 1/2	13 1/2	3/16	22 1/2	12 7/8	445		
6DG5-D	1	490	4.1	20x48	60	55 1/2	28	60 1/4	18 1/2	20 1/2	13 1/2	3/16	22 1/2	12 7/8	525		
8DG5-D	1	490	4.1	20x63	80	55 1/2	40	66 1/2	18 1/2	20 1/2	15	1/4	22 1/2	12 7/8	585		
6DH6-D	1 1/2	580	6.0	20x48	60	55 1/2	28	60 1/4	18 1/2	20 1/2	13 1/2	3/16	22 1/2	12 7/8	520		
8DH6-D	1 1/2	580	6.0	20x63	80	55 1/2	40	66 1/2	18 1/2	20 1/2	15	1/4	22 1/2	12 7/8	590		
6DJ7-D	2	490	7.5	20x48	60	55 1/2	28	69 1/2	18 1/2	20 1/2	13 1/2	3/16	23 1/4	12 7/8	545		
8DJ7-D	2	490	7.5	20x63	80	55 1/2	40	69 1/2	18 1/2	20 1/2	15	1/4	23 1/4	12 7/8	635		
8DN8-D	3	495	11.3	20x63	80	55 1/2	40	72 3/4	18 1/2	20 1/2	15	1/4	24	12 7/8	780		
12DN8-D	3	495	11.3	24x68	120	60 1/2	40	72 3/4	18 1/4	20 1/2	17 1/2	3/8	25 1/4	16	995		
12DN9-D	5	650	15.2	24x68	120	60 1/2	40	72 3/4	18 1/4	20 1/2	17 1/2	3/8	25 1/4	16	1025		
12DS9-D	5	550	17.5	24x68	120	61 1/4	40	82 1/2	18 1/4	20 1/2	18	3/8	30	16	1240		
20DS9-D	5	550	17.5	30x72	200	68	40	82 1/2	28	30 1/2	20	3/8	30 1/4	19	1455		

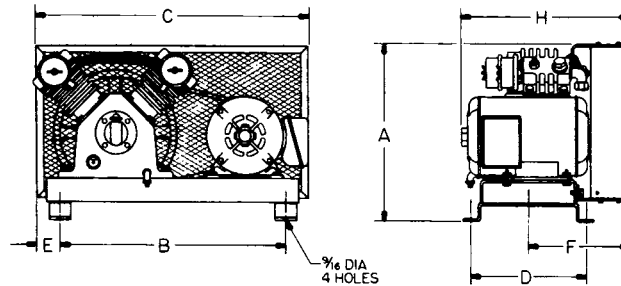
* Includes alternator panel. For dimensions without panel, refer to Simplex Specifications.

CURTIS

Since 1854

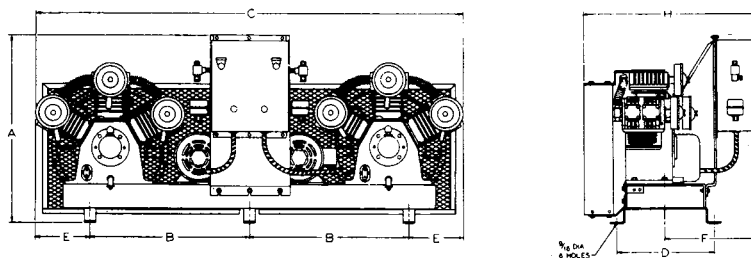
Specifications for SIMPLEX BASE MOUNTED Compressors

MODEL	MOTOR HP	RPM	CFM @ 80 PSI	DIMENSIONS							WT.	DISCHARGE NPT
				A	B	C	D	E	F	H		
WSG5	1	490	4.1	18 ¹ / ₄	16 ¹ / ₈	28 ³ / ₈	11 ⁷ / ₈	7 ³ / ₈	9 ¹ / ₈	15 ⁵ / ₈	200	1/2"
WSJ7	2	490	7.5	21	28	33 ³ / ₄	13	4 ¹ / ₄	10	17	375	3/4"
WSN8	3	495	11.3	23 ⁵ / ₈	28	34 ⁷ / ₈	13	5 ⁷ / ₈	10 ³ / ₄	17 ³ / ₄	415	
WSS9	5	550	17.5	27 ¹ / ₂	32 ⁵ / ₈	43	16 ¹ / ₄	8 ³ / ₄	14 ³ / ₈	23 ³ / ₈	558	
WSW11	10	560	37.6	33 ³ / ₄	29	40	13 ³ / ₈	10 ¹ / ₄	14 ¹ / ₄	21 ³ / ₄	1000	1-1/4"
WSZ12	15	650	67.4	34 ¹ / ₂	37 ⁵ / ₈	44 ³ / ₈	25 ¹ / ₄	5 ¹ / ₂	22	36 ⁵ / ₈	1150	
WSZ13	20	795	82.2	34 ¹ / ₂	37 ⁵ / ₈	44 ³ / ₈	25 ¹ / ₄	5 ¹ / ₂	22	36 ⁵ / ₈	1325	
WSZ14	25	940	92.7	34 ¹ / ₂	37 ⁵ / ₈	44 ³ / ₈	25 ¹ / ₄	5 ¹ / ₂	22	36 ⁵ / ₈	1450	



Specifications for DUPLEX BASE MOUNTED Compressors

MODEL	MOTOR HP	RPM	CFM @ 80 PSI	DIMENSIONS							WT.	DISCHARGE NPT
				A	B	C	D	E	F	H		
WDG5	1	490	4.1	37 ⁵ / ₈	22 ³ / ₄	60 ¹ / ₄	11 ⁷ / ₈	7 ³ / ₈	12 ¹ / ₂	21 ⁵ / ₈	475	3/4"
WDJ7	2	490	7.5	38 ¹ / ₄	30 ¹ / ₂	69 ¹ / ₂	12	4 ¹ / ₄	13 ¹ / ₄	23 ³ / ₄	620	
WDN8	3	495	11.3	38 ¹ / ₄	30 ¹ / ₂	72 ³ / ₄	12	5 ⁷ / ₈	13 ¹ / ₄	24	860	
WDS9	5	550	17.5	40 ¹ / ₈	32 ¹ / ₂	82 ¹ / ₂	16 ¹ / ₄	8 ³ / ₄	15 ¹ / ₈	29 ¹ / ₂	990	1-1/4"
WDW11	10	560	37.6	41	33 ¹ / ₂	87 ¹ / ₂	13 ³ / ₈	10 ¹ / ₄	16	30 ¹ / ₄	1430	
WDZ12	15	650	67.4	42 ³ / ₄	42	94	25 ¹ / ₄	5 ¹ / ₂	22 ¹ / ₂	45	2640	2"
WDZ13	20	795	82.2	42 ³ / ₄	42	94	25 ¹ / ₄	5 ¹ / ₂		45	2750	
WDZ14	25	940	92.7	42 ³ / ₄	42	94	25 ¹ / ₄	5 ¹ / ₂		45	2950	



CURTIS-TOLEDO, INC.

1905 Kienlen Avenue • St. Louis, Missouri 63133 • (314) 383-1300 • Fax (314) 381-1439

info@curtistoledo.com

Sales representatives in principal cities.