

## **Description**

The KMC XEC-3004 E/I-P Transducer converts an analog voltage (E) or current (I) signal into a linear pneumatic (P) output signal for accurate positioning of damper and valve actuators used in HVAC systems.

The unit can be powered by either 24 VAC or 24 VDC. Three selectable input ranges are available: analog voltage signals of 1 to 5 VDC or 2 to 10 VDC or an analog current signal of 4 to 20 mA. The input signal provides a 3 to 15 psig linear pneumatic output signal. A 1 to 5 VDC output feedback signal, proportional and linear to the 3–15 psig output signal, is provided. A gauge tap is also provided for pressure output indication. Manual override may be initiated by moving a jumper and adjusting a potentiometer.

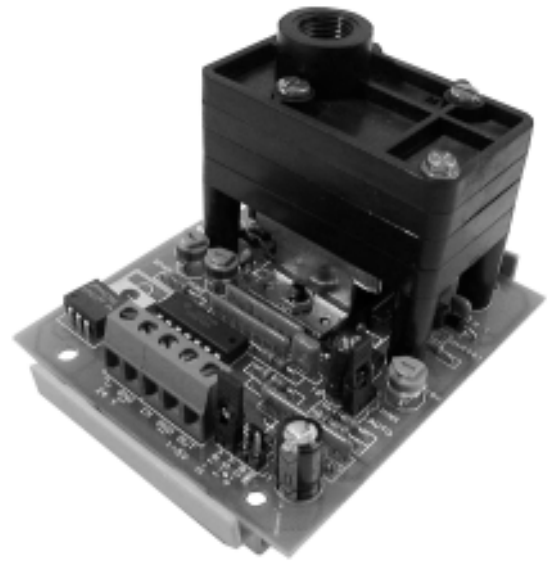
Standard 3.25" snaptrack is supplied for mounting.

## **Features**

- ◆ Can be powered from 24 VAC or 24 VDC sources
- ◆ Three user selectable input ranges available
- ◆ Gauge tap is provided for pressure output indication
- ◆ Manual override

## **Application**

The KMC XEC-3004 E/I-P Transducer is used in HVAC systems to provide an accurate signal for positioning damper and valve actuators based on branch line pressure.



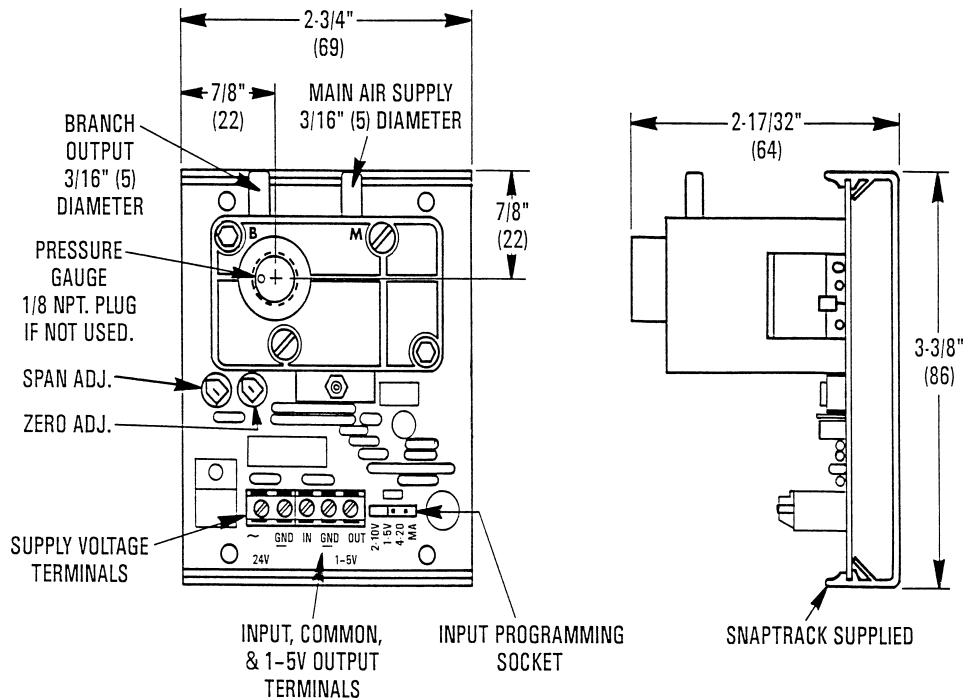
## **Accessories**

The following accessories are available:

HFO-0006	In-line air filter
ICI-1005	2", 0-30 psi gauge

## Details

All dimensions are in inches (mm)



## Specifications

<b>Input Signals</b>	1 to 5 VDC, 2 to 10 VDC, or 4 to 20 mA
<b>Input Resistance</b>	
1-5 VDC	100K ohms
2-10 VDC	200K ohms
4-20 mA	250 ohms
<b>Output Signal</b>	3 to 15 psig (21-103 kPa)
<b>Output Capacity</b>	200 scim (55 mL/s)
<b>Main Air</b>	
Supply	20 psig nominal (138 kPa) 30 psig maximum (207 kPa)
Consumption	28.8 scim (7.9 mL/s) @ 20 psig supply (138 kPa)
<b>Supply Voltage</b>	24 VAC, +20%/-15%, 1 VA, or 24 VDC, +66%/-8%, 50 mA
<b>Manual Override</b>	Jumper selectable with potentiometer adj. for 3-15 psig output
<b>Adjustments</b>	Factory set span and zero
<b>Mounting</b>	2.75" (70 mm) section of 3.25" (83 mm) snaptrack supplied for panel mounting. Not position sensitive, will fit 2.75" (70 mm) snaptrack for horizontal mounting.
<b>Weight</b>	5.5 ounces (155 grams)

### Material

Plastic	Glass-filled nylon, ABS
Diaphragms	Neoprene

### Operating Characteristics

Linearity	1% full scale
Hysteresis & repeatability	0.75% full scale

### Connections

Wiring	Screw terminals for 14-22 AWG, copper
Air	3/16" (5 mm) nipple for 1/4" (6 mm) OD polyethylene tubing. 1/8" (3 mm) female NPT for branch pressure gauge.

### Temperature Limits

Operating	40° to 120° F (4° to 49° C)
Shipping	-40° to 140° F (-40° to 60° C)
Humidity	Non-condensing

### KMC Controls, Inc.

19476 Industrial Drive  
New Paris, IN 46553  
574.831.5250

[www.kmcccontrols.com](http://www.kmcccontrols.com)